

TIMBER DESIGN CONSULTANTS

the future of wood construction



CUSTOM SOLUTIONS

Styxworks will search for optimal solutions and cost-competitive alternatives that leverage the benefits of today's innovative timber construction systems. With the sophisticated timber design software (Dietrich's CAD/CAM), we create detailed planning, design, CNC cutting files and assembly drawings for complete structural systems using wood products.



3D MODELING

From custom residential design to complex multi-story construction projects, Dietrich's software in the essential tool in the Styxworks' toolbox. With this powerful 3D modeling software, we are able to produce shop drawings, construction drawings, material lists, dimension take-offs, and machine data cutting files.



SHOP DRAWINGS

With experience not only in design, but in carpentry and timber production, we will provide accurate, detailed shop drawings to construct it right the first time.

STYXWORKS, LLC
809 east fridley street
bozeman, mt 59715
Phone: 406.581.0821
Email: jens@styxworks.com

Project Experience

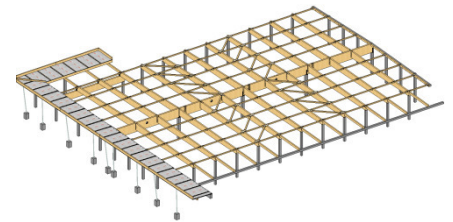
2012

Rewe Peiting Market – Germany

Client: Strab GmbH

Details: 25000 sqft Glulam Roof Structure

Services: 3D model, Shop & Construction Drawings and CNC Machine Files



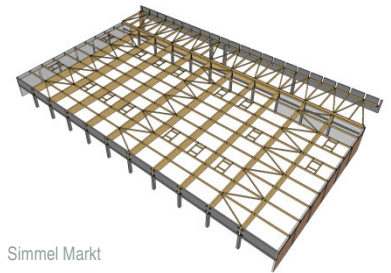
Rewe Peiting Market

Simmelmarkt – Stollberg, Germany

Client: Strab GmbH

Details: Glulam and CLT roof Structure

Services: 3D model, Shop & Construction Drawings and CNC Machine Files



Simmel Markt

Halle Legnoform – Soave, Italy

Client: Wiehag GmbH

Details: Glulam Canopy structure for an outdoor storage facility. Due to the use the structure needed a 2 hr fire protection. To accomplish this, all connections were covered with glulam pieces.

Services: 3D model, Shop & Construction Drawings and CNC Machine Files

2011

Elkford Community Centre – Elkford, BC Canada

Client: Structurlam – Penticton, BC

Details: 1670 m² multi-functional community centre that was constructed out of mixed materials, including visible CLT walls, SIPs and has a glulam roof structure.

Services: 3D model, Shop & Construction Drawings and CNC Machine Files



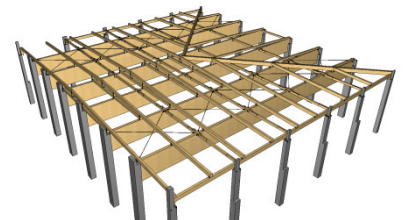
Elkford Community Centre – photo courtesy of Alfred Horie Construction

Sports Hall with 2 indoor fields – Bogen, Germany

Client: Wiehag GmbH

Details: 900 m² glulam roof structure with cambered girders

Services: 3D model, Shop & Construction Drawings and CNC Machine Files



Bogen Sportshall – Dietrichs 3D Rendering

Amery Trailhead Pavilion – Amery, Wisconsin, USA

Client: Timberweld

Details: Exposed Timberframe Pavilion Structure

Services: 3D model, Shop & Construction Drawings and CNC Machine Files



Amery Trailhead Pavilion

LIDL Market – Gengenbach, Germany

Client: Wiehag GmbH

Details: Glulam roof structure with prefabricated roof & wall elements

Services: 3D model, Shop & Construction Drawings and CNC Machine Files

TIMBER DESIGN CONSULTANTS

the future of wood construction



CUSTOM SOLUTIONS

Styxworks will search for optimal solutions and cost-competitive alternatives that leverage the benefits of today's innovative timber construction systems. With the sophisticated timber design software (Dietrich's CAD/CAM), we create detailed planning, design, CNC cutting files and assembly drawings for complete structural systems using wood products.



3D MODELING

From custom residential design to complex multi-story construction projects, Dietrich's software in the essential tool in the Styxworks' toolbox. With this powerful 3D modeling software, we are able to produce shop drawings, construction drawings, material lists, dimension take-offs, and machine data cutting files.



SHOP DRAWINGS

With experience not only in design, but in carpentry and timber production, we will provide accurate, detailed shop drawings to construct it right the first time.

STYXWORKS, LLC
809 east fridley street
bozeman, mt 59715
Phone: 406.581.0821
Email: jens@styxworks.com

2010

Lippebad Lünen – Lünen, Germany

Client: Wiehag GmbH

Details: Built to the extremely energy-efficient building standard, Passivhaus, this is the first public indoor swimming center to meet this standard. It has 51560 sqft of glulam roof construction, Lignotrend prefabricated roof elements and 3 tons of custom steel connectors.

Services: 3D model, Shop & Construction Drawings and CNC Machine Files for the roof structure



Lippe Bad – Lünen, Germany

Hotel Aqualux – Bardolino, Italy

Client: Finnforest-Merk

Details: Currently one of the largest hotels constructed in timber, it has 195,000 sqft of CLT panels used as the wall, floor & roof structure. It has 116 tons of custom steel connectors, 253 mBF of Kerto-LVL & glulam beams.

Services: This was an all-inclusive project where Timberline consulted during project development, created the drawings for the timber construction and performed on-site construction management. Constructing this project out of CLT saved 21 months of construction time over the original concrete design.



Aqualux Hotel – Bardolino, Italy

Theater – Bari, Italy (Wiehag GmbH)

Client: Wiehag GmbH

Details: Glulam roof structure

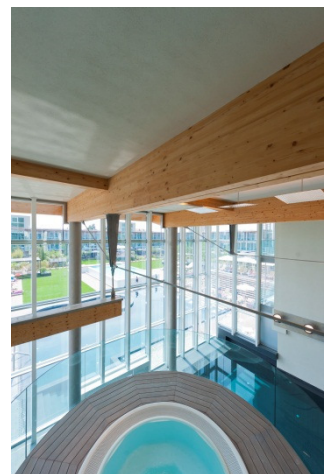
Services: 3D model, Shop & Construction Drawings and CNC Machine Files

Storage hall – Udine, Italy

Client: Wiehag GmbH

Details: Glulam roof construction, pitched & curved beams with a span of 80' with a moment spline connection

Services: 3D model, Shop & Construction Drawings and CNC Machine Files



Aqualux Hotel – Bardolino, Italy

2009

Community Centre – Buchen, Germany

Client: Finnforest-Merk

Details: CLT construction with visible walls and roof in Lignotrend elements

Services: 3D model, Shop & Construction Drawings and CNC Machine Files

Kindergarten – Darmstadt, Germany

Client: Finnforest-Merk

Details: CLT construction to Passivhaus Standard

Services: 3D model, Shop & Construction Drawings and CNC Machine Files



Aqualux Hotel – Bardolino, Italy

TIMBER DESIGN CONSULTANTS

the future of wood construction



CUSTOM SOLUTIONS

Styxworks will search for optimal solutions and cost-competitive alternatives that leverage the benefits of today's innovative timber construction systems. With the sophisticated timber design software (Dietrich's CAD/CAM), we create detailed planning, design, CNC cutting files and assembly drawings for complete structural systems using wood products.



3D MODELING

From custom residential design to complex multi-story construction projects, Dietrich's software in the essential tool in the Styxworks' toolbox. With this powerful 3D modeling software, we are able to produce shop drawings, construction drawings, material lists, dimension take-offs, and machine data cutting files.



SHOP DRAWINGS

With experience not only in design, but in carpentry and timber production, we will provide accurate, detailed shop drawings to construct it right the first time.

STYXWORKS, LLC
809 east fridley street
bozeman, mt 59715
Phone: 406.581.0821
Email: jens@styxworks.com

2009

Nietzsche Documentation Centre – Naumburg, Germany

Client: Finnforest-Merk

Details: Roof and façade structure in CLT

Services: 3D model, Shop & Construction Drawings and CNC Machine Files

Banca Etica (addition) – Padua, Italy

Client: Bertani Gino srl.

Details: 25000 sqft addition with CLT

Services: 3D model, Shop & Construction Drawings and CNC Machine Files

2008

Industrial Halle for Print Shop Reiter – Salzburg, Austria

Client: Wiehag GmbH

Details: 21000 sqft Glulam roof structure with prefabricated elements

Services: 3D model, Shop & Construction Drawings and CNC Machine Files

2007-2008

Dietrich's Holzbau Software Training for the following companies in the USA & Canada

- Suretight – Greensburg, PA
- Porter Corp – Holland, MI
- Timbersystems – Toronto & Vancouver
- Nicola Logworks – Merrit, BC

2007

Hotel Il Gillo – Val di Sole, Italy

Client: MHM

Details: 3 story hotel in MHM solid wall panels, timber frame floor and roof structure

Services: Project Development, 3D model, Shop & Construction Drawings and CNC Machine Files. In addition provided on-site construction management for timber frame.

Supermarket – Demaro, Italy

Client:

Details: 12900 sqft glulam roof structure with Lignatur box elements

Services: Project Development, 3D model, Shop & Construction Drawings and CNC Machine Files. In addition provided on-site construction management for timber frame.



Nietzsche Center – Naumburg, Germany



Nietzsched Center – Naumburg, Germany



Hotel Gillo



Hotel Il Gillo

TIMBER DESIGN CONSULTANTS

the future of wood construction



CUSTOM SOLUTIONS

Styxworks will search for optimal solutions and cost-competitive alternatives that leverage the benefits of today's innovative timber construction systems. With the sophisticated timber design software (Dietrich's CAD/CAM), we create detailed planning, design, CNC cutting files and assembly drawings for complete structural systems using wood products.



3D MODELING

From custom residential design to complex multi-story construction projects, Dietrich's software in the essential tool in the Styxworks' toolbox. With this powerful 3D modeling software, we are able to produce shop drawings, construction drawings, material lists, dimension take-offs, and machine data cutting files.



SHOP DRAWINGS

With experience not only in design, but in carpentry and timber production, we will provide accurate, detailed shop drawings to construct it right the first time.

STYXWORKS, LLC
809 east fridley street
bozeman, mt 59715
Phone: 406.581.0821
Email: jens@styxworks.com

2007

BayWa-Makt – Backnang, Germany

Client: Wiehag GmbH

Details: 26900 sqft glulam roof structure with 80' span,

Services: 3D model, Shop & Construction Drawings and CNC Machine Files

Bila-Market – St. Veit, Austria

Client: Wiehag GmbH

Details: 8600 sqft glulam roof structure with cambered, pitched & curved beams and prefab roof elements

Services: 3D model, Shop & Construction Drawings and CNC Machine Files

Pedestrian Bridge – Bad Schallerbach, Austria

Client: Wiehag GmbH

Details: 80' span glulam bridge, main beams covered with siding, no chemical treatment needed

Services: 3D model, Shop & Construction Drawings and CNC Machine Files

New Trade Center – Frankfurt, Germany

Client: Wiehag GmbH

Details: 12800 sqft glulam ceiling and 6500 sqft of prefabricated wall elements with glulam beams up to 60' high.

Services: 3D model, Shop & Construction Drawings and CNC Machine Files

Condominium – Montenegro, Italy

Client: Bertani Gino srl./ Ekocasa

Details: CLT walls, floors in Lignatur box elements and timber frame roof

Services: Project Development, 3D model, Shop & Construction Drawings and CNC Machine Files, on-site construction management

Single Family home & training – Brasov, Romania

Client: Dietrich's software

Details: Design of the first produced house in MGM solid wall panels

Services: Training in Dietrich's software for a Hundegger PBA & K2 machine



Building Complex via Ripamonti, Milan Italy



Ekocasa - Padua, Italy



Passivhaus residence – Garmisch, Germany

TIMBER DESIGN CONSULTANTS

the future of wood construction



CUSTOM SOLUTIONS

Styxworks will search for optimal solutions and cost-competitive alternatives that leverage the benefits of today's innovative timber construction systems. With the sophisticated timber design software (Dietrich's CAD/CAM), we create detailed planning, design, CNC cutting files and assembly drawings for complete structural systems using wood products.



3D MODELING

From custom residential design to complex multi-story construction projects, Dietrich's software in the essential tool in the Styxworks' toolbox. With this powerful 3D modeling software, we are able to produce shop drawings, construction drawings, material lists, dimension take-offs, and machine data cutting files.



SHOP DRAWINGS

With experience not only in design, but in carpentry and timber production, we will provide accurate, detailed shop drawings to construct it right the first time.

STYXWORKS, LLC
809 east fridley street
bozeman, mt 59715
Phone: 406.581.0821
Email: jens@styxworks.com

2006

Timber Bridge – Canazei, Italy

Client: Rasom Holz & Ko. / Wiehag GmbH

Details: 60' span glulam bridge for single lane truck traffic

Services: 3D model, Shop & Construction Drawings and CNC Machine Files

Pedestrian Bridger – Tesero, Italy

Client: Rasom Holz & Ko.

Details: 112' span glulam bridge

Services: 3D model, Shop & Construction Drawings and CNC Machine Files

Office and Sales Building for Asiago Cheese – Asiago, Italy

Client: Wiehag GmbH

Details: 490 mBH glulam construction, floor spans up to 40' with a 2hr fire rating, 5800 sqft of CLT wall panels with 90 min fire rating and high snow loads (83psf)

Services: 3D model, Shop & Construction Drawings and CNC Machine Files

2002-today

More than 200 other residential and commercial projects in Italy, Austria, France and Germany

Client: Various

Details: CLT, glulam and timber frame construction with footprints from 50 sqft to 50000 sqft.

Services: Project Development, 3D model, Shop & Construction Drawings, CNC Machine Files and On-site construction management,



Pedestrian Bridge Bad Schallerbach



Consortzio Asiago



Single-family home – Nogara, Italy